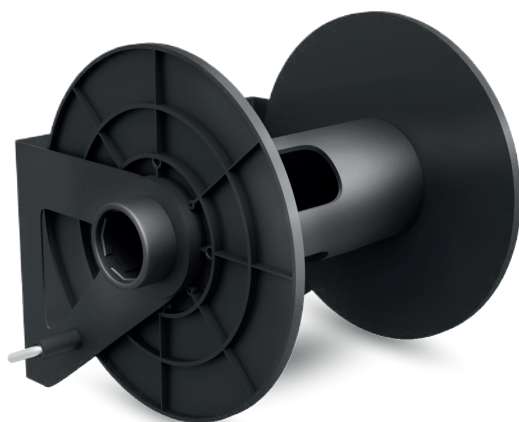


BIGBOI HOSE REEL INSTRUCTION MANUAL

BLOW **R** HOSE REEL



HOSE REEL

Please read the operating instructions carefully before use.



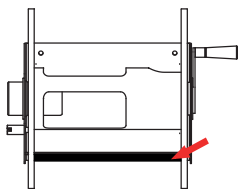
INTRODUCTION

Thank you for purchasing the bigboy BLOWR HOSEREEL. Please read the following instructions carefully to help ensure your product is set up correctly.

Take your drying experience to the next level with this BLOWR wall hose reel. Enjoy the benefits of this ultimate hose storage solution with an easy connect & wind up and down function.

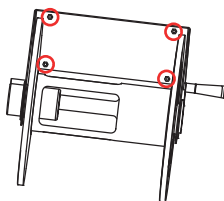
Elevate your detailing game with this great addition to your BLOWR!!

BIGBOI BLOWR HOSE REEL SET



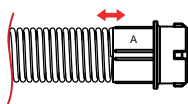
Step 1:

Remove the hose reel from gift box. Before mounting make sure the support rod is located on the bottom, this will indicate that the hose reel is the right side up.



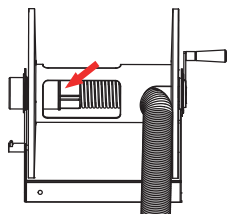
Step 2:

Subject to the wall material you will be mounting to, please mount the hose reel with the 4 fixing points on the rear bracket of the reel as marked in image. Note: Fastening screws or bolts are not included.



Step 3

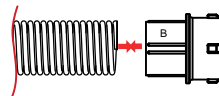
Remove the original connector from the 9M hose



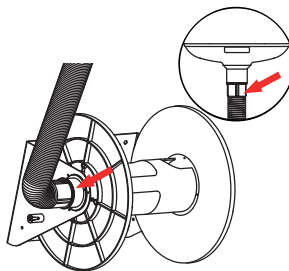
Step 5

Once the hose reel is mounted, using your current 9-meter hose place the hose through the right side cut out and connect to the locking connection by twisting the hose in a clockwise motion.

Step 4

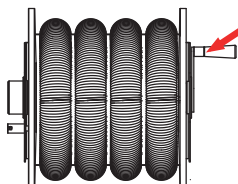


Attach the new connector from the hose reel kit



Step 6

Using the short hose provided, connect one side to the hose locking point on the side of the reel in a clockwise twisting motion. The other side of the hose will connect to your Blower's hose connection in the same motion.

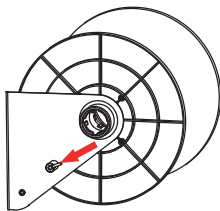


Step 7:

Using the handle on the right side, coil the hose by guiding it along neatly.

PLEASE NOTE :

The hose must be uncoiled before turning the Blower on. Failure to do so may occur in damaging the hose or reel. Same applies when storing the hose back onto the reel.



Step 8:

To secure your coiled hose, use the locking pin on the left side to lock the reel in place. To uncoil the hose, remove the locking pin.



IMPORTANT SAFETY FIRST

Before attempting to use this product please read all of the safety precautions and operating instructions outlined in this manual to reduce the risk of damage to the products and personal injury.

For more information please visit or contact us on

www.ibigboi.com

ANOTHER PRODUCT FROM BIGBOI INTERNATIONAL